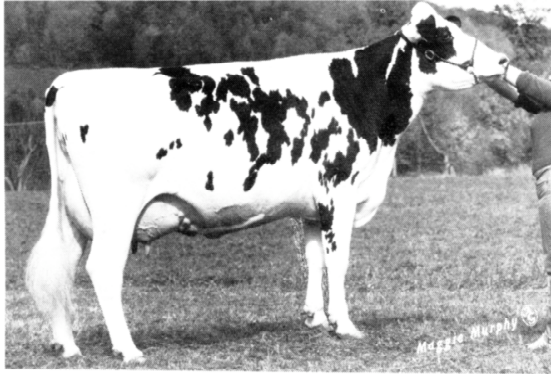
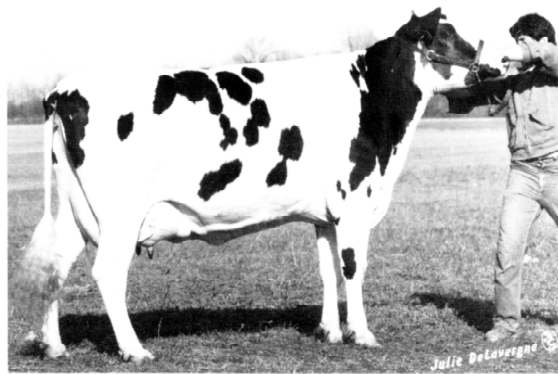


4-YEAR-OLD HOLSTEIN COWS



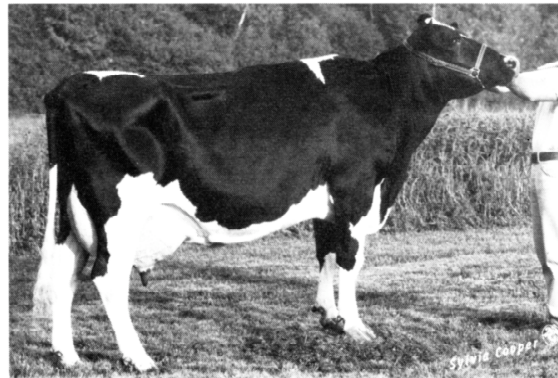
Cow 1



Cow 2



Cow 3



Cow 4

REASONS ON 4-YEAR-OLD HOLSTEIN COWS

Good morning. I am contestant number 10-A. I placed this class of 4-year-old Holstein cows 1-2-3-4. I find this class to have an obvious top in 1 and bottom in 4 and a close pair in 2 and 3.

Number 1 places over 2 easily because of her tremendous advantage in mammary. She exhibits a higher rear udder attachment and stronger fore udder attachment. Further, she has more desirable size and placement of teats. Number 1 easily places over 2 in feet and legs, being straighter in rear legs, having a rounder foot with deeper heel and stronger pasterns. Finally, 1 has an advantage over 2 in dairy character, being cleaner about the head, neck, and throat and sharper over the withers. I do grant that 2 is a larger cow, being longer, taller, and deeper bodied than 1.

In my middle pair I find a close placing. Number 2 places over 3 because of her advantage in frame. She is straighter and stronger across the topline and wider in the chest and blends more smoothly at the neck-shoulder junction. Number 2 further places over 3 in mammary, being smoother in fore

udder attachment. However, I grant 3 an advantage in dairy character, being cleaner about the head, neck, and shoulder, long in the neck, sharper in the withers, carrying less flesh over the ribs and thighs, and showing more prominence of mammary veins. Number 3 further is more correct in teat size and shape.

In the bottom pair, 3 has an advantage over 4 in udder depth, carrying her udder higher above the hocks. Number 3 is stronger and more balanced in fore udder and has more desirable teat size and shape. She also excels in udder balance and appears to have greater veining. Finally, 3 has an advantage in frame, being longer from hips to pins and straighter across the topline. I grant 4 an advantage in rear legs, having a more desirable set.

I place the black cow, number 4, last because of her lack of strength in frame to place any higher today. She is narrow in the chest, U-necked, and coarse in the shoulder. For these reasons, I place this class of 4-year-old cows 1-2-3 and 4.

Are there any questions?